

=> fil reg

FILE 'REGISTRY' ENTERED AT 09:57:47 ON 12 JUN 2007
 USE IS SUBJECT TO THE TERMS OF YOUR STN CUSTOMER AGREEMENT.
 PLEASE SEE "HELP USAGETERMS" FOR DETAILS.
 COPYRIGHT (C) 2007 American Chemical Society (ACS)

Property values tagged with IC are from the ZIC/VINITI data file
 provided by InfoChem.

STRUCTURE FILE UPDATES: 11 JUN 2007 HIGHEST RN 937009-96-6
 DICTIONARY FILE UPDATES: 11 JUN 2007 HIGHEST RN 937009-96-6

New CAS Information Use Policies, enter HELP USAGETERMS for details.

TSCA INFORMATION NOW CURRENT THROUGH December 2, 2006

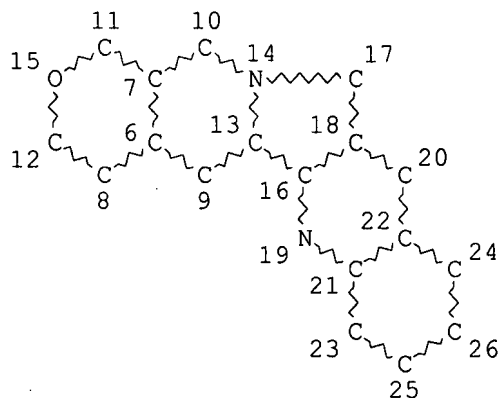
Please note that search-term pricing does apply when
 conducting SmartSELECT searches.

REGISTRY includes numerically searchable data for experimental and
 predicted properties as well as tags indicating availability of
 experimental property data in the original document. For information
 on property searching in REGISTRY, refer to:

<http://www.cas.org/support/stngen/stndoc/properties.html>

=> d sta que l15

L13 STR



NODE ATTRIBUTES:
 DEFAULT MLEVEL IS ATOM
 DEFAULT ECLEVEL IS LIMITED

GRAPH ATTRIBUTES:
 RSPEC 8
 NUMBER OF NODES IS 21

STEREO ATTRIBUTES: NONE
 L15 5101 SEA FILE=REGISTRY SSS FUL L13

100.0% PROCESSED 7422 ITERATIONS
 SEARCH TIME: 00.00.01

5101 ANSWERS

=> d his

(FILE 'HOME' ENTERED AT 09:23:31 ON 12 JUN 2007)
SET COST OFF

FILE 'HCAPLUS' ENTERED AT 09:23:51 ON 12 JUN 2007

L1 1 S US20050147617/PN OR (US2005-506524# OR WO2003-CN164 OR CN2002
L2 6115 S ?CAMPTOTHECIN?
L3 163 S L2 AND (?GLYCIN? OR ?GLYCYL? OR GLY)
L4 17 S L3 AND (PEG OR POLYOXYETHYLENE OR POLYOXY ETHYLENE OR POLY()(
L5 0 S L3 AND (PEO OR POLYETHYLENEOXIDE OR POLYETHYLENE OXIDE OR POL
L6 20 S L3 AND (POLYETHYLENEGLYCOL OR POLYETHYLENE GLYCOL OR POLY() (E
L7 0 S L3 AND PEGYLAT?
L8 26 S L4,L6
SEL RN L1

FILE 'REGISTRY' ENTERED AT 09:31:23 ON 12 JUN 2007

L9 11 S E1-E11
L10 1 S 7689-03-4
L11 STR
L12 50 S L11
L13 STR L11
L14 50 S L13
L15 5101 S L13 FUL
SAV L15 SATYA506A/A
L16 108 S L15 AND (C2H4O OR 75-21-8/CRN OR 25322-68-3/CRN OR 107-21-1/C
L17 32 S L16 AND 5/NR
L18 3 S L17 AND (" (C2H4O)NC34H40N6O9" OR " (C2H4O)NC37H43N5O11")/MF
L19 57 S L16 AND NR>=10
L20 2 S L19 AND (" (C2H4O)NC72H79N11O22" OR " (C2H4O)NC115H113N15O36")/
L21 5 S L18,L20
L22 19 S L16 NOT L17,L19
L23 5 S L22 AND (" (C2H4O)N(C2H4O)NC54H66N8O15" OR " (C2H4O)NC54H68N6O1
L24 1 S L22 AND OC2/ES
L25 11 S L21,L23,L24

FILE 'HCAPLUS' ENTERED AT 09:52:41 ON 12 JUN 2007

L26 9 S L25
L27 0 S L26 AND PY<=2002 NOT P/DT
L28 3 S L26 AND (PD<=20020305 OR PRD<=20020305 OR AD<=20020305) AND P

FILE 'REGISTRY' ENTERED AT 09:53:38 ON 12 JUN 2007

FILE 'HCAPLUS' ENTERED AT 09:53:39 ON 12 JUN 2007

L29 TRA L8 1- RN : 1997 TERMS

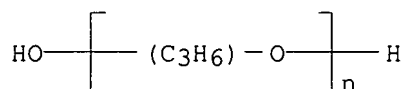
FILE 'REGISTRY' ENTERED AT 09:53:41 ON 12 JUN 2007

L30 1997 SEA L29
L31 101 S L30 AND L15
L32 46 S L31 AND L16
L33 39 S L32 NOT L25
L34 3 S L33 AND (" (C2H4O)N(C2H4O)NC51H63N9O13" OR " (C2H4O)N(C2H4O)NC3

FILE 'HCAPLUS' ENTERED AT 09:56:52 ON 12 JUN 2007

L35 5 S L34
L36 0 S L35 AND PY<=2002 NOT P/DT
L37 2 S L35 AND (PD<=20020305 OR PRD<=20020305 OR AD<=20020305) AND P
L38 5 S L34,L37

FILE 'REGISTRY' ENTERED AT 09:57:47 ON 12 JUN 2007



RETABLE

Referenced Author (RAU)	Year (RPY)	VOL (RVL)	PG (RPG)	Referenced Work (RWK)	Referenced File
Daiichi Pure Chem Co Lt	1997			WO 9701631 A1	HCAPLUS
Mitsubishi Chem Ind Ltd	1985			JP 60096605 A	HCAPLUS
Siegel, R	1989			DE 3730797 A	HCAPLUS

=> d his

(FILE 'HOME' ENTERED AT 09:23:31 ON 12 JUN 2007)
SET COST OFF

FILE 'HCAPLUS' ENTERED AT 09:23:51 ON 12 JUN 2007

L1 1 S US20050147617/PN OR (US2005-506524# OR WO2003-CN164 OR CN2002
L2 6115 S ?CAMPTOTHECIN?
L3 163 S L2 AND (?GLYCIN? OR ?GLYCYL? OR GLY)
L4 17 S L3 AND (PEG OR POLYOXYETHYLENE OR POLYOXY ETHYLENE OR POLY() (
L5 0 S L3 AND (PEO OR POLYETHYLENEOXIDE OR POLYETHYLENE OXIDE OR POL
L6 20 S L3 AND (POLYETHYLENEGLYCOL OR POLYETHYLENE GLYCOL OR POLY() (E
L7 0 S L3 AND PEGYLAT?
L8 26 S L4,L6
SEL RN L1

FILE 'REGISTRY' ENTERED AT 09:31:23 ON 12 JUN 2007

L9 11 S E1-E11
L10 1 S 7689-03-4
L11 STR
L12 50 S L11
L13 STR L11
L14 50 S L13
L15 5101 S L13 FUL
SAV L15 SATYA506A/A
L16 108 S L15 AND (C2H4O OR 75-21-8/CRN OR 25322-68-3/CRN OR 107-21-1/C
L17 32 S L16 AND 5/NR
L18 3 S L17 AND ("(C2H4O)NC34H40N6O9" OR "(C2H4O)NC37H43N5O11")/MF
L19 57 S L16 AND NR>=10
L20 2 S L19 AND ("(C2H4O)NC72H79N11O22" OR "(C2H4O)NC115H113N15O36")/
L21 5 S L18,L20
L22 19 S L16 NOT L17,L19
L23 5 S L22 AND ("(C2H4O)N(C2H4O)NC54H66N8O15" OR "(C2H4O)NC54H68N6O1
L24 1 S L22 AND OC2/ES
L25 11 S L21,L23,L24

FILE 'HCAPLUS' ENTERED AT 09:52:41 ON 12 JUN 2007

L26 9 S L25
L27 0 S L26 AND PY<=2002 NOT P/DT
L28 3 S L26 AND (PD<=20020305 OR PRD<=20020305 OR AD<=20020305) AND P

FILE 'REGISTRY' ENTERED AT 09:53:38 ON 12 JUN 2007

FILE 'HCAPLUS' ENTERED AT 09:53:39 ON 12 JUN 2007

L29 TRA L8 1- RN : 1997 TERMS

FILE 'REGISTRY' ENTERED AT 09:53:41 ON 12 JUN 2007

L30 1997 SEA L29
 L31 101 S L30 AND L15
 L32 46 S L31 AND L16
 L33 39 S L32 NOT L25
 L34 3 S L33 AND (" (C2H4O)N(C2H4O)NC51H63N9O13" OR "(C2H4O)N(C2H4O)NC3

FILE 'HCAPLUS' ENTERED AT 09:56:52 ON 12 JUN 2007

L35 5 S L34
 L36 0 S L35 AND PY<=2002 NOT P/DT
 L37 2 S L35 AND (PD<=20020305 OR PRD<=20020305 OR AD<=20020305) AND P
 L38 5 S L34,L37

FILE 'REGISTRY' ENTERED AT 09:57:47 ON 12 JUN 2007

FILE 'HCAPLUS' ENTERED AT 09:57:56 ON 12 JUN 2007

FILE 'REGISTRY' ENTERED AT 09:58:13 ON 12 JUN 2007

L39 1 S L9 AND "(C2H4O)NCH4O"/MF
 L40 1 S 25322-68-3
 L41 STR
 L42 50 S L41
 L43 231539 S L41 FUL
 L44 278 S L43 AND C2H4O
 L45 0 S L43 AND (75-21-8/CRN OR 25322-68-3/CRN OR 107-21-1/CRN)
 L46 10 S L43 AND L15
 L47 4 S L44 AND L46
 L48 3 S L47 NOT L25,L34
 L49 6 S L46 NOT L47,L25,L34

FILE 'HCAPLUS' ENTERED AT 10:07:38 ON 12 JUN 2007

L50 4 S L48
 L51 0 S L50 AND PY<=2002 NOT P/DT
 L52 2 S L50 AND (PD<=20020305 OR PRD<=20020305 OR AD<=20020305) AND P
 L53 2 S L52 NOT L38

FILE 'REGISTRY' ENTERED AT 10:08:28 ON 12 JUN 2007

FILE 'HCAPLUS' ENTERED AT 10:08:34 ON 12 JUN 2007

FILE 'REGISTRY' ENTERED AT 10:09:18 ON 12 JUN 2007

L54 4987 S L15 NOT L16,L46

FILE 'HCAPLUS' ENTERED AT 10:09:22 ON 12 JUN 2007

L55 8184 S L54
 L56 9410 S L55,L2
 L57 3956 S L56 AND PY<=2002 NOT P/DT
 L58 1066 S L56 AND (PD<=20020305 OR PRD<=20020305 OR AD<=20020305) AND P
 L59 5022 S L57,L58
 L60 14 S L59 AND L39
 L61 128 S L59 AND L40
 L62 136 S L60,L61

FILE 'REGISTRY' ENTERED AT 10:10:42 ON 12 JUN 2007

FILE 'HCAPLUS' ENTERED AT 10:10:52 ON 12 JUN 2007

L63 TRA L62 1- RN : 5936 TERMS

FILE 'REGISTRY' ENTERED AT 10:11:01 ON 12 JUN 2007

L64 5936 SEA L63
L65 236 S L64 AND L43
L66 11 S L65 AND L44
L67 225 S L65 NOT L66

FILE 'HCAPLUS' ENTERED AT 10:12:52 ON 12 JUN 2007

L68 20 S L67 AND L62
L69 1 S L68 AND L39(L) RACT+NT/RL
L70 2 S L68 AND L40(L) RACT+NT/RL
L71 3 S L69,L70
L72 9 S L8 AND (PD<=20020305 OR PRD<=20020305 OR AD<=20020305) AND P/
L73 2 S L8 AND PY<=2002 NOT P/DT
L74 11 S L72,L73
L75 10 S L74 NOT L38,L53,L71
L76 10 S L75 AND L15
L77 8 S L75 AND L39,L40
L78 10 S L75-L77
L79 1 S L1 AND L9

=>